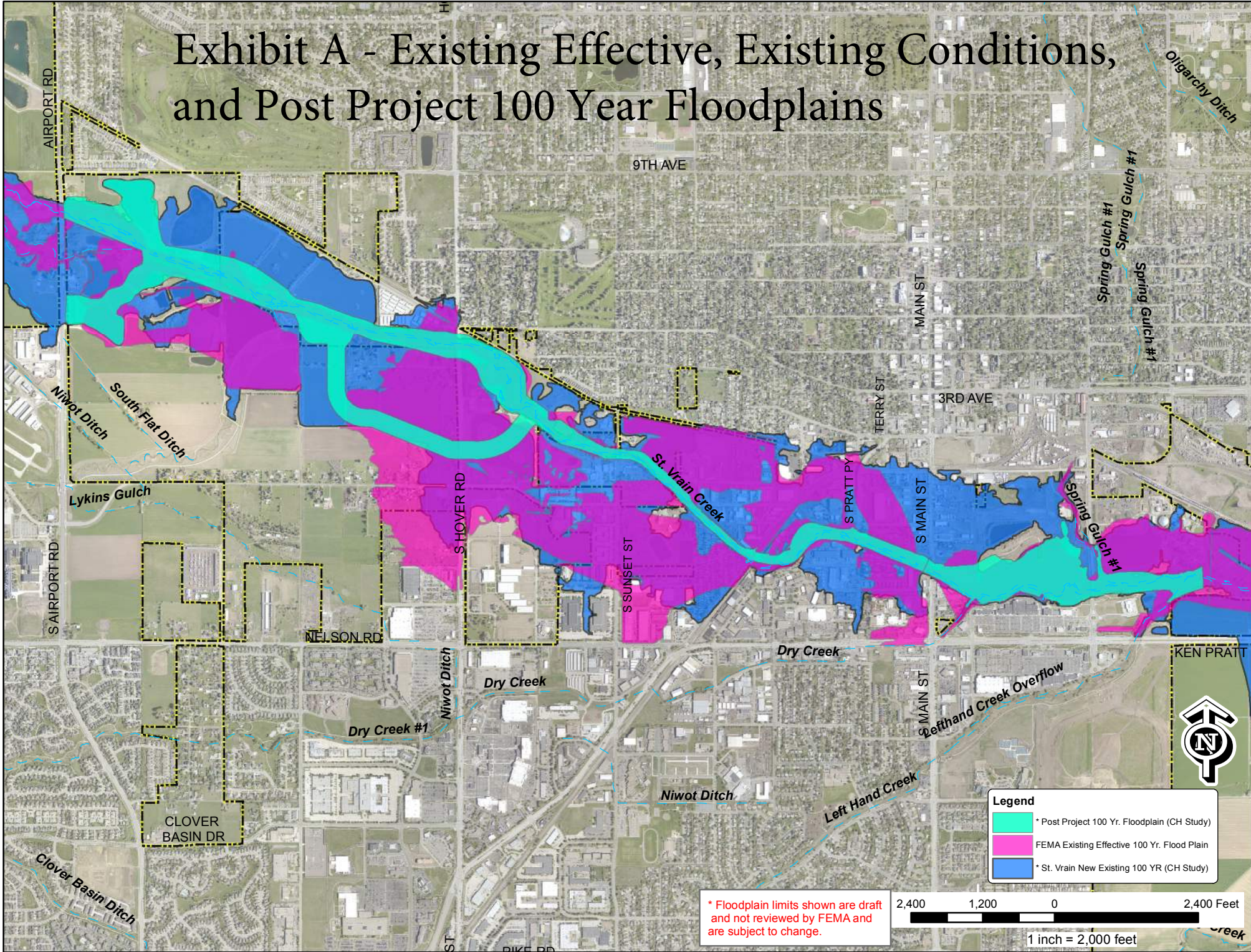
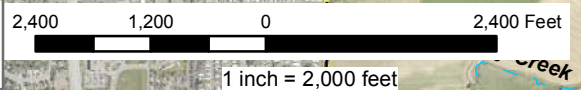


Exhibit A - Existing Effective, Existing Conditions, and Post Project 100 Year Floodplains

Path:\Projects\450803 St Vrain Crk Improvement (D-39)\450803_2017\Effective & New CH Floodplain\Effective & New CH Floodplain.mxd



* Floodplain limits shown are draft and not reviewed by FEMA and are subject to change.



Legend

- * Post Project 100 Yr. Floodplain (CH Study)
- FEMA Existing Effective 100 Yr. Flood Plain
- * St. Vrain New Existing 100 YR (CH Study)